

AZURE DEVELOPMENT

BEING A REPLAT OF A PORTION OF FRENCHMAN'S YACHT CLUB DEVELOPMENT, ACCORDING TO THE PLAT THEREOF, AS RECORDED IN PLAT BOOK 108, AT PAGE 55 THROUGH 56 INCLUSIVE, OF THE PUBLIC RECORDS OF PALM BEACH COUNTY FLORIDA, SAID LANDS LYING AND SITUATE IN SECTION 29, TOWNSHIP 41 SOUTH, RANGE 43 EAST, CITY OF PALM BEACH GARDENS, PALM BEACH COUNTY, FLORIDA

23

State of Florida }
County of Palm Beach } SS

THIS PLAT WAS FILED FOR RECORD AT _____ M.

THIS _____ DAY OF _____ A.D. 2014 AND DULY RECORDED

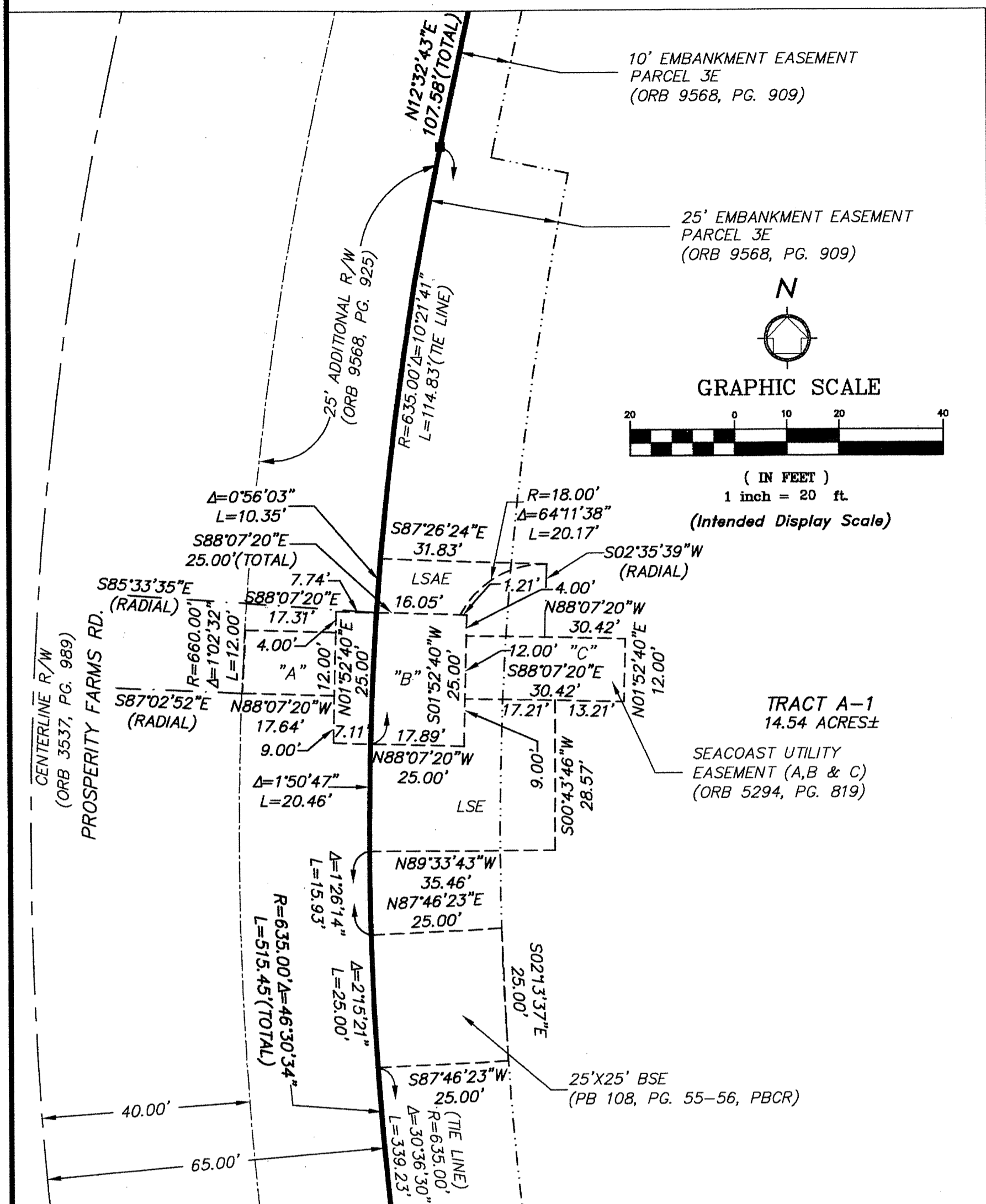
IN PLAT BOOK _____ ON PAGES _____ THROUGH _____

SHARON R. BOCK
CLERK AND COMPTROLLER

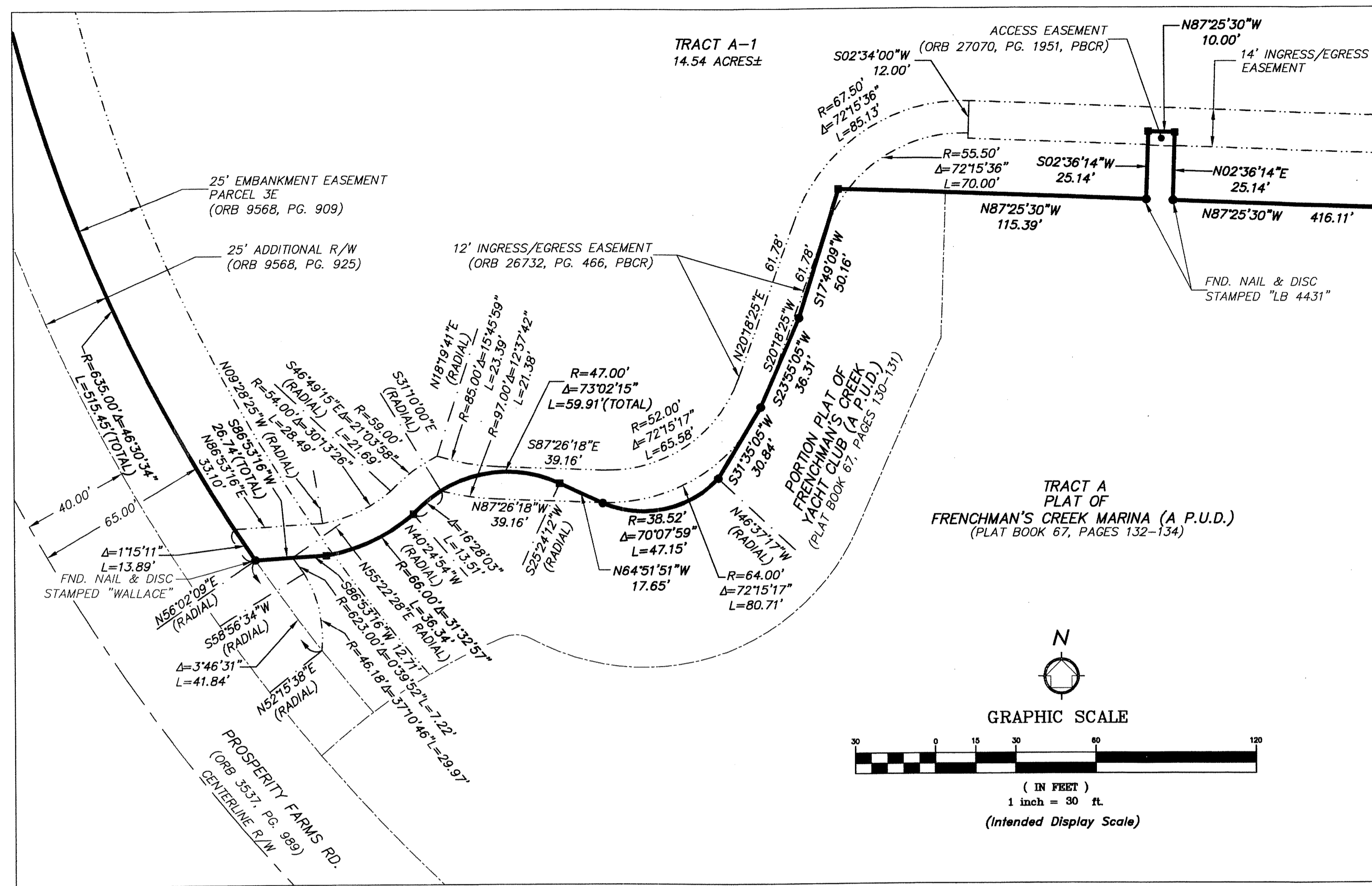
BY: _____
DEPUTY CLERK

SHEET 3 OF 8 SHEETS

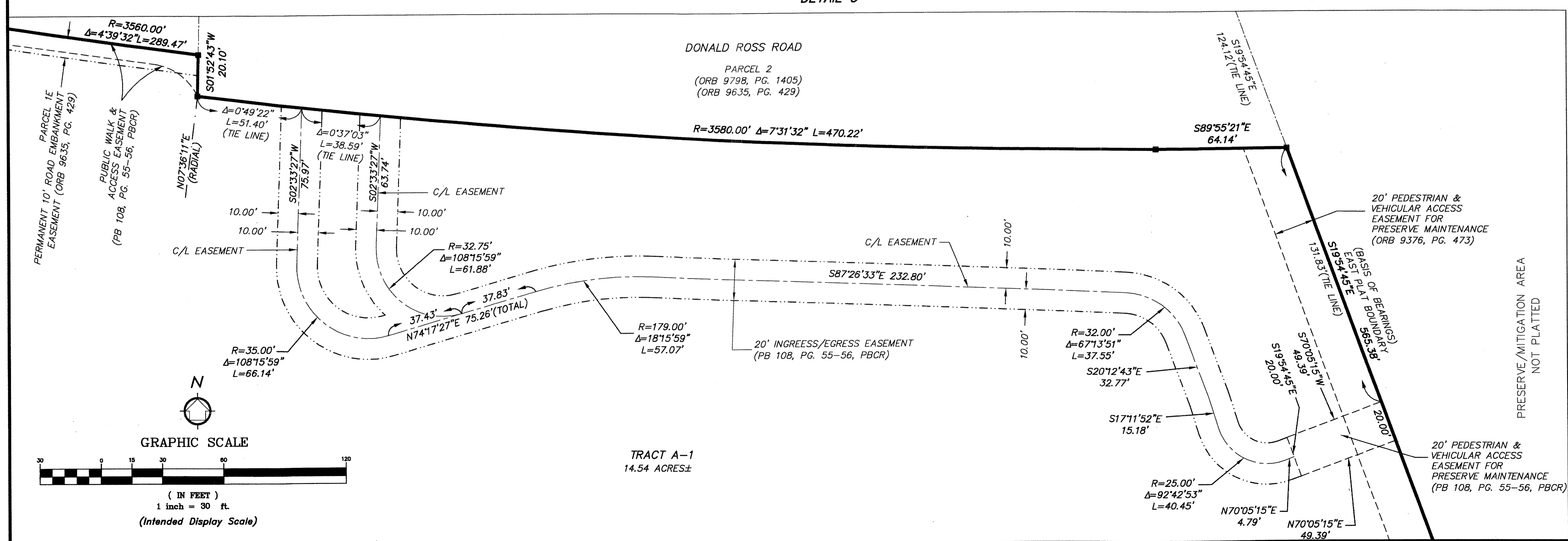
"DETAIL A"



"DETAIL B"



"DETAIL C"



- LEGEND:**
- C/L = CENTERLINE
 - BSE = BELL SOUTH EASEMENT
 - Δ = DELTA (CENTRAL ANGLE)
 - FPL = FLORIDA POWER & LIGHT
 - Fnd. = FOUND
 - LB = LICENSED BUSINESS
 - L = LENGTH OF ARC
 - LSE = LIFT STATION EASEMENT
 - LSAE = LIFT STATION ACCESS EASEMENT
 - ORB = OFFICIAL RECORDS BOOK
 - PG. = PAGE
 - PBCR = PALM BEACH COUNTY RECORDS
 - PRM = PERMANENT REFERENCE MONUMENT
 - PB = PLAT BOOK
 - R = RADIUS
 - R/W = RIGHT-OF-WAY
 - UE = UTILITY EASEMENT
 - WSE = WATER & SEWER EASEMENT
 - = FOUND OR SET 4"x4" CONC. PRM & ALUMINUM CAP STAMPED "LB 7055" EXCEPT AS NOTED.
 - = FOUND OR SET NAIL & DISC STAMPED "LB 7055" EXCEPT AS NOTED.

NOTE:
THE 14.00 FOOT WIDE PORTION OF THE INGRESS/EGRESS EASEMENT BEING REPLATTED AND SHOWN HEREON WAS PREVIOUSLY CREATED BY FRENCHMAN'S YACHT CLUB DEVELOPMENT, PLAT BOOK 108, PAGE 55, PALM BEACH COUNTY RECORDS.

NOTE:
THERE ARE OTHER EASEMENTS OF RECORD THAT AFFECT THIS SITE AND NOT SHOWN FOR CLARITY PURPOSES. FOR ALL EASEMENTS SEE SHEET 2.

WGI
Wantman Group, Inc.

Engineering ♦ Planning ♦ Surveying ♦ Environmental
2035 VISTA PARKWAY, SUITE 100, WEST PALM BEACH, FL 33411
(866) 909-2220 phone (561) 687-1110 fax
CERTIFICATE OF AUTHORIZATION No. LB 7055
ORLANDO - PORT ST. LUCIE - TAMPA
THIS INSTRUMENT WAS PREPARED BY DEREK G. ZEMAN, P.S.M.
PROFESSIONAL SURVEYOR AND MAPPER, LICENSE NO. 5655
FOR THE FIRM: WANTMAN GROUP, INC.